

Dunatex

Products

“PRESENT YOURSELF TO THE MAX”

...we will help you

According to a wish to respect the needs of our customers, we can provide your working clothes with emblems, signs, promotional badges, embroidery, company logos, with monochromatic or multicolored motifs and simple or complex designs on textile material of your choice. If you looking for a creative way to create your logos and symbols which are presented the power of your corporate identity of your company on the market, we offer you the high quality of services from our real strong partner in the field of graphic design.



CONTENT

SIZE TABLE ACCORDING TO STN 340.....4

Men.....	4
Women.....	4
Standard sizes tables.....	4

WORKWEAR..... 6

Cotton line.....	6
Cotton line plus.....	7
Comfort line.....	8
Lint Proof.....	9
Mixed fabric.....	10
SHK.....	11
ESD.....	11
Womens professional clothing.....	13
Twisting Double pilot.....	13

PROTECT WEAR.....14

Steel Proof.....	14
Alu Proof.....	14
Multi Prof.....	16
Chemical protective clothing.....	17
Flame-retardant nomex comfort fabric clothing.....	18
Welders protective clothing.....	18
Visibility clothing.....	19

SIZE TABLE ACCORDING TO STN 340

Men

Size	44	46	48	50	52	54	56	58	60	62	64	66
International symbols	S		M		L		XL		XXL		XXXL	
Chest perimeter	88	92	96	100	104	108	112	116	120	124	128	132
Waist circumference	74	78	82	88	94	100	106	112	118	124	130	136

Height categories: 164 - 176 cm (I), 176 - 188 cm (II), 188 - 194 cm (III)

Women

Size	38	40	42	44	46	48	50	52	54	56	58	60	62	64
International symbols	XS		S		M		L		XL		XXL		XXXL	
Chest perimeter	76	80	84	88	92	96	100	104	108	112	116	120	124	128
Waist circumference	84	88	92	96	100	104	108	112	116	120	124	128	132	136

Height categories: 158 – 164 cm (I), 164 – 170 cm (II), 170 – 176 cm (III)

1. Please check your mass with the table sizes, without the addition of free space size, which is already determined by the standard and included in the product.
2. There is already the difference between work and already worn size.
3. When entering a size, enter also the height category. (for example, 52 / II)
4. The size should be determined separately for blouses and trousers (because it does not necessarily give the parable in size numbering appointed for those clothing ranges)

Standard sizes tables

Men and Women sizes in comparison (roughly)

Men	42	44	46	48	50	52	54	56
Women	36	38	40	42	44	46	48	50

Náprsenkové nohavice

Size	46	48	50	52	54	56	58
International symbols	90	94	98	101	105	111	116
lateral length	105	108	109	111	112	114	115

Coat, Jacket, Sako

Size	46	48	50	52	54	56	58
Chest perimeter	112	116	120	124	128	132	136
Waist circumference	84	88	92	96	100	106	110
Sleeves length	61	61	63	64	65	66	67

Pants

Size	46	48	50	52	54	56	58
Waist circumference	112	116	120	124	128	132	136
Lateral length	105	108	109	111	112	114	115

Women size

Size	36	38	40	42	44	46	48	50	52
Chest perimeter	84	88	92	96	100	104	110	116	122
Waist circumference	66	70	74	78	82	86	92	98	104
Sleeves length	90	94	98	102	106	110	116	122	128

If You wish we can offer our Products in additional extra sizes.



PRACOVNÉ ODEVY

COTTON LINE

For our cotton workwear line, we use a 100% cotton twill with Sanfor® equipment. This comes in a heavy goods 320g/qm (in white smocks in 240g/qm). Cotton line is a standard product of consistent quality always available.



Work shirt 30

with high neck collar, placket, a breast patch pocket, sleeve cuffs with button closure, available in double wide neck sizes 39/40 to 49/50



Short coat 052

Lapel collar, concealed placket, a patch, reinforced chest and 2 side pockets with diagonal procedure, one inside breast pocket on the left



Gowns, long 0666

Lapel button-through, 1 patch reinforced chest and 2 side pockets



Boiler Suit 03

sewn-on hood with tape feeder, concealed buttons, inserted a pouch pocket on the right, through pocket with the left button closure, sleeve cuffs with snap closure, elastic waist, pocket rule pocket on the right, knee strengthening, leg bars



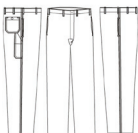
Dungarees 040

with stretch straps and buckles, 2 patch pockets reinforced with diagonal procedure, one double patch bib pocket with zipper, 2 side openings, hoisted kidney protection, double meter rule pocket on right, 1 back pocket with closure



Shortly Kittel 0510

Lapel collar, concealed button placket, a patch, reinforced chest and 2 side pockets with diagonal procedure, one inside breast pocket on the left



Trousers 103

Waistband with 7 belt loops, two set-in pouch pockets, ruler pocket on the right, 1 back pocket with closure

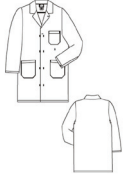


Jacket 122

high neck width-adjustable with turn-down collar, attached waistband, concealed placket, 2 chest pockets with flaps and button closure, left breast pocket with pencil pocket, 2 side patch pockets with slanted intervention, 1 inside chest pocket on the left, pen pocket on left sleeve, cuffs with buttons, folds at the back

COTTON LINE PLUS

The quality of our work clothes Cotton Plus has proven itself over many years and is available in the long term. Cotton Plus is durable and comfortable to wear.



Short coat 194

Lapel collar, concealed placket, a patch chest and 2 side pockets, 1 inside chest pocket on the left



Jacket 012

high neck width-adjustable with turn-down collar, attached waistband, concealed placket 2 chest pockets with flaps and button closure, left breast pocket with pencil pocket, 2 side patch pockets with slanted intervention, one inside breast pocket on the left, pen pocket on left sleeve cuffs with snaps



Jacket 014

highly closed with width-adjustable collar, concealed placket, a patch chest and 2 side pockets, cuffs with buttons



Overall 022

high neck with collar, concealed placket, 2 patch reinforced chest pockets with flaps and snap closure, 2 patch side pockets with diagonal interference, pass-through to the right and left, cuffs with press-studs wide adjustable waist with belt feeder, ruler pocket on the right, 1 back pocket



Dungarees 040

with stretch straps and buckles, 2 patch pockets reinforced with diagonal procedure, one double patch bib pocket with zipper, 2 side openings, hoisted kidney protection, double meter rule pocket on right, 1 back pocket with closure



Trousers 115

Waistband with 7 belt loops, two set-in pouch pockets, ruler pocket on the right, 1 back pocket with closure, adjustable hem with snaps far



Trousers with knee pad pockets 1153

Waistband with 7 belt loops, two set-in pouch pockets, ruler pocket on the right, 1 back pocket with closure, wide adjustable hem with snaps, 2 knee pockets for knee pads



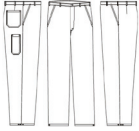
Jacket 171

highly closed with width-adjustable collar, attached waistband, concealed placket, 2 chest pockets with flaps and snap closure, cuffs with buttons



Dungarees 1839

with stretch straps and buckles, 2 patch side pockets with diagonal procedure, one double patch bib pocket with flap and snap closure at waist side stretch panels, hoisted kidney protection, double meter rule pocket on right, 1 back pocket with flap and snap closure, hem width-adjustable



Dungarees 190

with stretch straps and buckles, 2 set-in pouch pockets, 1 patch bib pocket with flap and snap closure, a left side opening, hoisted kidney protection, meter rule pocket on right, 1 back pocket, adjustable hem far



Dungarees with knee pad pockets 1909

with stretch straps and buckles, 2 set-in pouch pockets, 1 patch bib pocket with flap and snap closure, a left side opening, hoisted kidney protection, meter rule pocket on right, 1 back pocket, adjustable hem far; 2 knee pockets for knee pads

KOMFORT LINE

Comfort Line® workwear is durable, tear-resistant and retains its excellent wearing properties. Our Comfort Line® workwear is designed with many thoughtful details and advanced functionality for the ideal professional life. Our quality program Comfort Line® is made of quality fabric 65% cotton, 35% polyester, 300 gsm manufactured by the Intex-size table. You can request the models in the quality of 65% polyester, 35% cotton, 250g/qm.



Jacket 1810

high neck with collar, attached waistband, concealed placket, 2 chest pockets with flaps and press stud closure, cell phone pocket on the right breast pocket, 2 patch pockets with slanted intervention, a small inside pocket with zipper on right, 1 inside chest pocket left sleeve pocket on left sleeve, sleeve cuffs snaps adjustable, folds at the back, contrasting color front and back yoke, reflective piping across the back and chest



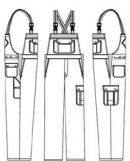
Trousers 1812

Pleats, waistband with 7 belt loops, two set-in pouch pockets, double pocket rule pocket on right, 2 back pockets, right hip pocket with closable flap, one additional left thigh pocket with mobile phone pocket, contrasting interventions on the side pockets, reflective piping



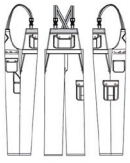
Trousers with knee pad pockets 1814

Pleats, waistband with 7 belt loops, two set-in pouch pockets, double pocket rule pocket on right, 2 back pockets, right hip pocket with closable flap, one additional left thigh pocket with mobile phone pocket, contrasting interventions on the side pockets, reflective piping, 2 knee pockets for knee pads



Dungarees 1816

with color-contrasting stretch straps and Einsteckschnallen, 2 set-in pouch pockets, patch bib pocket with flap and snap closure, bib pocket with side pencil dividers, bib pocket inside with zipper, one additional left thigh pocket with mobile phone pocket, stretch wedges on either side of openings, hoisted kidney protection, double meter rule pocket on right, 2 back pockets, right with flap, contrasting interventions on the side pockets and colored trim on the Latzoberkante, reflective piping, adjustable waistband



Dungarees with knee pad pockets 1817

with color-contrasting stretch straps and buckles, 2 set-in pouch pockets, patch bib pocket with flap and snap closure, bib pocket with side pencil dividers, bib pocket inside with zipper, one additional left thigh pocket with mobile phone pocket, contrasting color stretch wedges on either side of openings, hoisted kidney protection, double meter rule pocket on right, 2 back pockets, right with flap, colored trim on the bib above kneew, 2 knee pockets for knee pads, reflective piping, adjustable waistband

LINT PROOF

Lint Proof® clothing is made of lint-free filament, causing the fiber to minimize wear. By using the Negastat® fiber by Dupont® in addition a static charge of the clothing is prevented. This Lint Proof® clothing is ideal for field use in spray booths and the like. Of course, the fabric meets the standard of proof Lint® 1149-3.



Overall 1320

with high neck collar, placket with 2-way zipper zone under the armpit, 2 chest pockets with flaps and hidden plastic snaps, separate male subjects in the left breast pocket, 2 side pockets, 1 back pocket with flap and hidden plastic snaps, 1 bellows cargo pocket with flap and hidden plastic snaps on the left, filling the right pocket, sleeves with static-knit cuffs, elasticated waist, elasticated leg seams, back yoke with ventilation openings, front and back yoke in contrasting colors



Overall 1305

with stand collar, placket with two-way zipper, 2 patch pockets with flaps and Velcro, separate male subjects in the left breast pocket, 1 inside chest pocket with closure, two side pockets, 1 ruler pocket, 1 back pocket with flap closure, 1 leg pocket with flap closure, cuffs with Velcro closure, elastic at the waist, leg cuffs with snap adjustment, front and back yoke, back yoke with vent openings, back yoke, collar, Koller-saddle, front and back yoke color



Overall 1306

high neckline with high collar and tongue, bar with 2-way zipper, 2 patch pockets with flaps and Velcro, 1 back pocket with Velcro closure, cuffs with a wedge and Velcro leg vent with Velcro, front and back yoke, ventilation Koller-saddle in the back, waist rubber spacer



Overall 1308

high neckline with high collar, placket with two-way zipper, 2 patch pockets with flaps and Velcro closure, 2 side pockets, 1 back pocket with Velcro closure, one pocket rule pocket, sleeve cuffs with a wedge and Velcro leg slot with Velcro closure, front and back yoke, ventilation Koller-saddle in the back, waist with rubber spacer



Coat 1382

Lapel collar, front zipper closing, 1 chest and 2 side pockets with reinforcement, without closure, one inside chest pocket with hidden snap closure on the right, 2 vents on the back

MIXED FABRIC

Our mixed fabric program includes approved standard forms as required Intex-cuts sections with elaborate details of the working day.



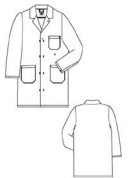
Vest 3710

V-neckline, cap sealing strip with snaps, 2 side pockets, 1 inside pocket, front and back yoke of cord fabric bib in the back, quilted lining



Short coat 1836

Lapel collar, concealed placket, a patch chest and 2 side pockets with diagonal procedure, one chest pocket on the left outside, one inside breast pocket on the right, knife pocket behind the right side pocket



Coat, short 194

Lapel collar, concealed placket, a patch chest and 2 side pockets, 1 inside chest pocket on the left



Jacket 014

highly closed with width-adjustable collar, concealed placket, a patch chest and 2 side pockets, cuffs with buttons



Overall 022

high neck with collar, concealed placket, 2 patch reinforced chest pockets with flaps and snap closure, 2 patch side pockets with diagonal interference, pass-through to the right and left, cuffs with press-studs wide adjustable waist with belt feeder, ruler pocket on the right, 1 back pocket



Trousers 115

Waistband with 7 belt loops, two set-in pouch pockets, ruler pocket on the right, 1 back pocket with closure, adjustable hem with snaps far



Jacket 171

highly closed with width-adjustable collar, attached waistband, concealed placket, 2 chest pockets with flaps and snap closure, cuffs with buttons



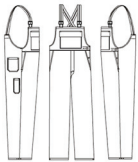
Jacket 1838

high neck width-adjustable with turn-down collar, attached waistband, concealed placket, 2 chest pockets with flaps and button closure, left breast pocket with pencil pocket, 2 side patch pockets with slanted intervention, 1 inside chest pocket on the left, pen pocket on left sleeve, cuffs with buttons



Dungarees 1839

with stretch straps and buckles, 2 patch side pockets with diagonal procedure, one double patch bib pocket with flap and snap closure at waist side stretch panels, hoisted kidney protection, double meter rule pocket on right, 1 back pocket with flap and snap closure, hem width-adjustable



Dungarees 190

with stretch straps and buckles, 2 set-in pouch pockets, 1 patch bib pocket with flap and snap closure, a left side opening, hoisted kidney protection, meter rule pocket on right, 1 back pocket, adjustable hem far

SHK

SHK professional clothing is a high quality Cotton Plus product and consists of 65% cotton and 35% polyester, 300 gsm. Clothing with the SHK-corner ring may only be shipped to guild members



Coat, short 194

Lapel collar, concealed placket, a patch chest and 2 side pockets, 1 inside chest pocket on the left



Dungarees with knee pad pockets 1840

with stretch straps and buckles, 2 patch side pockets with diagonal procedure, one double patch bib pocket with flap and snap closure, stretch wedges on both sides, hoisted kidney protection, 1 meter rule pocket on right, 1 back pocket with closure, an HVAC strip at the top bib hem, 2 knee pockets for inclusion of kneepads



Jacket 1842

sewn up close with turn-down collar, two chest pockets with flap with 2 covered mounted push buttons, left chest pocket with pencil pocket, 2 side pockets with diagonal procedure, one inside left pocket, sleeve cuffs with press-studs wide adjustable front with concealed press studs on the chest pocket flaps is an HVAC strips with HVAC emblem on the left sleeve



Trousers 115

Waistband with 7 belt loops, two set-in pouch pockets, ruler pocket on the right, 1 back pocket with closure, adjustable hem with snaps far



Trousers with knee pad pockets 1153

Waistband with 7 belt loops, two set-in pouch pockets, ruler pocket on the right, 1 back pocket with closure, wide adjustable hem with snaps, 2 knee pockets for knee pads

ESD

Our ESD work clothes for men and women combined polyester, cotton and carbon guide. The fabric of our ESD work wear meets the standard EN 1149-1.



Coat, short 194

Lapel collar, concealed placket, a patch chest and 2 side pockets, 1 inside chest pocket on the left



Mens coats 1945

Short, 1 chest and 2 side pockets, 1 inside chest pocket, hidden bar, push buttons, blue collar remote



Womens coats 619

Lapel collar, long sleeves, 2 side pockets incorporated in the front, concealed press studs



Womens coats 6195

with collar and lapels, long sleeves, 2 side pockets incorporated in the front, princess seams in front and back, small back belt, concealed buttons, back yoke, blue collar remote



Long Jacket 1270

high neck, button closure, 2 side pockets concealed self-closing, sleeves with cuffs



Mens pants 1271

Waistband with 7 belt loops, 2 inset pockets bag



Womens trousers 1272

Waistband with 7 belt loops, 2 inset pockets bag



Mens pants 1273

Waistband with 7 belt loops, two set-in pouch pockets, 2 cargo pockets on the legs



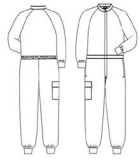
Womens trousers 1274

Waistband with 7 belt loops, two set-in pouch pockets, 2 cargo pockets on the legs



Long Jacket 1275

without pockets, stand-up collar, concealed placket, sleeves with cuffs



Overall 1276

Stand-up collar with snap closure, 2-way zipper, 2 side slits, 1 leg pocket with flap and right internal loop, cuffs and trousers with cuffs, elastic drawstring waist

WOMENS PROFESSIONAL CLOTHING

Womens professional clothing we have in the quality 100% cotton or in combinations of cotton and polyester.



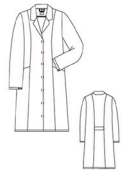
Womens wrap coat 8070

Lapel collar, tie belt, 2 side pockets, seams in the front and back, 1/1 long



Ladies sleeveless gown 620

Turn-down collar with small lapels, hidden placket pressure, 2 side pockets, small Rückengut, princess seams in front and back, long sleeves

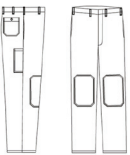


Womens coats 621

Turn-down collar with small lapels, hidden button closure, 2 side pockets, small back belt, princess seams in front and back, long sleeves

TWISTING DOUBLE PILOT

Twisting Double pilot is one of our proven product lines and is always available in our standard program for you. These articles are available in three colors (navy blue, royal blue, hunter green) always available.



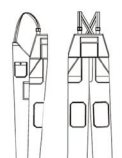
Trousers 107

Waistband with 7 belt loops, two set-in pouch pockets, ruler pocket on the right, 1 back pocket with closure, reinforced knees



Jacket 111

with high neck collar, concealed placket, a breast patch and 2 patch pockets



Dungarees 183

with stretch straps and buckles, 2 patch pockets reinforced with diagonal procedure, a patch bib pocket with flap and snap closure, two side openings, hoisted kidney protection, meter rule pocket on right, 1 back pocket with closure, reinforced knees

TWISTING DOUBLE PILOT

STEEL PROOF

With Steel Proof® Dunatex offers will now be a crucial improved protective clothing, the most significant shortcomings of previously used products or not having at least greatly reduced.

The main advantages at a glance:

- optimized dripping off of liquid metals and slags
- Reduction of the breakdown of red-hot metal
- increased heat barrier to radiant heat
- comfortable to wear, the fabric after washing RECOURSE will keep soft and supple
- significantly reduced intake, even at industrial laundry
- higher abrasion resistance, therefore a longer service life



Trousers 101

Waistband with 7 belt loops, two set-in pouch pockets, ruler pocket on the right with flap and snap closure, back pocket with flap and snap closure



Jacket 120

Highly closed with turn-down collar, concealed placket, a one patch chest and 2 side pockets with flaps and snap closure, one inside breast pocket on the right, cuffs with wide adjustable buttons



Dungarees 260

with stretch straps and buckles, 2 set-in pouch pockets, a bib pocket with flap and snap closure, side opening on the left, hoisted kidney protection, meter stick right pocket with flap and snap closure, back pocket with flap and snap closure

ALU PROOF

Aluminum Proof® protective clothing provides effective protection against injuries. Due to its special composition and fabric construction makes aluminum Proof® liquid aluminum slide quickly, providing maximum protection. In addition, aluminum Proof® high wearing comfort.

In the development of aluminum Proof® was also put to good care property value, so that the protective clothing suitable for industrial laundering.

Aluminum Proof® is offered in a heavy goods 230g/qm as a shirt. The shirt already complies with the standards EN 531 A, B1 and C1, and D1 and E1 levels.

Our one-and two-tone aluminum Proof® collection with a weight of 360g/qm for jackets, trousers and coats already certified to the new nomenclature EN ISO 11611 and EN ISO 11612.



Jacket 405

highly closed with turn-down collar, attached waistband, concealed placket, 2 chest and 2 side pockets with angled flaps and button closure, sleeve cuffs with wide adjustable buttons



Trousers 415

Waistband with 7 belt loops, 2 set in pouch pockets, 1 right thigh pocket with slanted flap and snap closure, one back pocket with slanted flap and snap closure, from knee to hem with double-layer stuff



Mens coat 3042

with high neck collar, concealed snap closure, 1 chest and 2 side pockets with angled flaps and snap closure, one inside breast pocket on the left



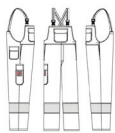
Jacket 3110

Stand-up collar with Velcro closure, concealed placket, 2 chest pockets with flaps and snap closure, 2 side pockets parallel to the side seams with flaps and press studs, sleeve cuffs with snaps adjustable, adjust separation doubled forward and placed behind red sleeves from the hem up to the upper arm



Dungarees 3120

Stretch straps with push-in buckle, 2 set-in pouch pockets, 1 patch bib pocket with flap and snap closure, side opening on the left, hoisted kidney protection, ruler pocket on the right with flap and snap closure, one back pocket with flap and snap closure; used below the knee, an approximately 20 cm red stripe from the knee double-up to the hem, aluminum-Proof® label on the meter stick bag



Trousers 3130

Waistband with 7 belt loops, two set-in pouch pockets, 1 back pocket with flap and snap closure, pocket ruler pocket on right with flap and snap closure, approximately 20 cm below the knee a red stripe used, from knee double-up to hem, aluminum proof® label on the meter stick bag



Nohavice 3130

Pás so 7 pútkami pre opasok, dve našité vrecká - kapsy, 1 zadné vrecko s chlopňou s patentovým zatváraním, vpravo vrecko pre stolársky meter s chlopňou uzatvárateľné pomocou patentiek, pod kolenom cca. 20 cm našitý červený pruh, od kolena po lem dvojrstvové spevnenie, etiketa Alu Proof® umiestnená na vrecku pre stolársky meter



Dungarees 4253

Stretch straps with buckles, two set-in pouch pockets, 1 patch bib pocket with slanted flap and snap closure, side opening on the left, hoisted kidney protection, meter rule pocket on right, 1 left thigh pocket with slanted flap and snap closure, one back pocket with slanted flap and snap closure, from knee double-up to hem



Protection Shirt 306

with high neck collar, concealed placket, 2 chest pockets with flaps and snaps, sleeve cuffs with adjustable snaps wide, front yoke, back vent with Koller, available in 50 double wide neck sizes 37/38 to 49 /

MULTI PROOF

In many companies today, employees are exposed to not just one but a number of different hazards. Most personal protective equipment (PPE) to protect against only one or two risks.

With Multi-Proof® protective clothing to protect your employees extensively to heat, flames or chemicals. Through the integrated special fiber, the electrostatic charge breaks down again, multi-Proof® provides active protection against explosions. When combined with a breathable membrane, multi-Proof® as a weather protective clothing according to EN 343 are used.

In addition, multi-Proof® good water shedding properties upon contact with some liquid metals.

This versatility makes multi-Proof® the first choice for a variety of applications. Here typical applications are:

- Petrochemical plants
- transport of dangerous goods
- Petrolstations
- Power stations and electricity networks
- certain areas of the metal processing industry



Shirt 4021

1/1 sleeves, adjustable cuffs, one chest pocket with flaps, back yoke, smooth push-button locking system
Weight: 240 g / sqm



Polo shirt 298

To close with turn-down collar, front closure with 3 buttons, 1/1 sleeve
Weight: 230 g / sqm



Jacket 405

highly closed with width-adjustable collar, attached waistband, concealed placket, 2 chest and 2 side pockets with angled flaps and button closure, sleeve cuffs with snaps



Dungarees 425

Stretch straps with Buckles, 2 set-in pouch pockets, 1 patch bib pocket with slanted flap and snap closure, side opening on the left, hoisted kidney protection, meter rule pocket on right, 1 left thigh pocket with slanted flap and snap closure, one back pocket with slanted flap and snap closure



Overall 435

high neck with collar, concealed placket, 2 chest pockets with angled flaps and button closure, sleeve cuffs with snaps adjustable, a set-in pouch pocket, ruler pocket on the right rear pants, a left thigh pocket with slanted flap and snap closure, one back pocket with slanted flap and snap closure



Mens coats 3042

with high neck collar, concealed snap closure, 1 chest and 2 side pockets with angled flaps and snap closure, one inside breast pocket on the left



Trousers 4151

Waistband with 7 belt loops, two set-in pouch pockets, ruler pocket on the right, 1 left thigh pocket with slanted flap and snap closure, one back pocket with slanted flap and snap closure



Jacket 4061

high neck with collar, attached waistband, concealed placket, 2 each patch breast and side pockets with flaps and press stud closure, cell phone pocket on the right breast pocket, 1 inside chest pocket left sleeve cuffs with snaps adjustable, color-contrasting front and back yoke reflective piping, across the back and chest



Trousers 4161

Waistband with 7 belt loops, two set-in pouch pockets, ruler pocket wide right with reflective piping on the sides, 1 back pocket with closable flap, slit with zipper, one additional left thigh pocket with mobile phone pocket, contrasting interventions on the side pockets, reflective piping on the leg pockets, 18 mm reflective stripes on the legs



Dungarees 4261

with color-contrasting stretch straps and Buckles, 2 set-in pouch pockets, patch bib pocket with flap and snap closure, an additional left thigh pocket with mobile phone pocket, a side entry, high solid renal protection, meter rule pocket on right, 1 back pocket with closable flap, contrasting interventions on the side pockets and colored trim at the bib upper edge, reflective piping on the leg pockets, 18mm reflective tape on the legs



Mens coats 4913

with high neck collar, concealed snap closure, 1 chest and 2 side pockets with flap and snap closure, 1 inside chest pocket, front and back yoke in contrasting colors, reflective strip on the back



Multi-function jacket 1070

high neck with collar, concealed 2-way zipper and extra flap with press studs, 2 set slanted welt pockets with button closure, a used breast pocket with flap on left, 1 inside chest pocket, attached hood rolled into collar, lined with breathable membrane, 2 put reflective tape on the body and sleeves

CHEMICAL PROTECTIVE CLOTHING

With our chemical protective clothing are your employees protected for a variety of commercially available chemicals. In addition, the fabric is resistant to boiling.

The fabric is extremely abrasion and tear resistant and thus durable. Our chemical protective clothing is extremely durable and comfortable to wear. In addition, our clothing is suitable for industrial laundering.



Shirt 302

Turndown collar with snap closure, concealed placket, long sleeves, adjustable cuffs with wind deflectors, 1 chest pocket with slanted flap



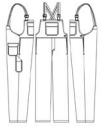
Jacket 4474

highly closed with width-adjustable collar, concealed placket, a patch chest and 2 side pockets with flaps and snap closure, one inside breast pocket on the right, cuffs with buttons to adjust width



Trousers 4475

Waistband with 7 belt loops, two set-in pouch pockets with snap button closure, pocket rule pocket on right with diagonal procedure, one back pocket with flap and snap closure



Dungarees 4476

with stretch straps and buckles, 2 set-in pouch pockets, 1 patch bib pocket with flap and snap closure, side opening on the left, hoisted kidney protection, meter rule pocket on right, 1 back pocket with flap and snap closure

FLAME-RETARDANT NOMEX COMFORT FABRIC CLOTHING

Flame-retardant Nomex Comfort fabric clothing exclusively with anti-static component. The federal and dungarees have an additional, convenient leg pocket. The jacket features two chest each and 2 side pockets.



Mens shirt 402

1/1 sleeves, adjustable cuffs, one chest pocket with flaps, back yoke, simple smooth push-button locking system



Jacket 405

highly closed with width-adjustable collar, attached waistband, concealed placket, 2 chest and 2 side pockets with angled flaps and button closure, sleeve cuffs with snaps



Dungarees 425

Stretch straps with quick release buckle, 2 set-in pouch pockets, 1 patch bib pocket with slanted flap and snap closure, side opening on the left, hoisted kidney protection, meter rule pocket on right, 1 left thigh pocket with slanted flap and snap closure, one back pocket with slanted flap and snap closure



Trousers 4151

Waistband with 7 belt loops, two set-in pouch pockets, ruler pocket on the right, 1 left thigh pocket with slanted flap and snap closure, one back pocket with slanted flap and snap closure

WELDERS PROTECTIVE CLOTHING

We deliver our customers welders protective clothing as required in two qualities. For light loads, we recommend the 360 g heavy goods for tougher applications, we offer the 460 g of heavy goods. Both qualities we have in the program for years and they have proven themselves in practice. To a flame retardant Proban equipment is used.



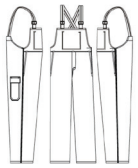
Trousers 10

Waistband with 7 belt loops, two set-in pouch pockets, ruler pocket on the right with flap and snap closure



Jacket 1125

with high neck collar, concealed placket, a patch chest and 2 side pockets with flaps and snap closure, one inside breast pocket on the right, wide adjustable cuffs with buttons, available in double sizes



Dungarees 26

with stretch straps and buckles, 2 set-in pouch pockets, 1 inside bib pocket, side opening on the left, hoisted kidney protection, ruler pocket on the right with flap and snap closure



Jacket 112

highly closed with width-adjustable collar, concealed placket, a patch chest and 2 side pockets with flaps and snap closure, one inside breast pocket on the right, cuffs with buttons

VISIBILITY CLOTHING

Our visibility clothing system with its signal color for better visibility of the wearer and minimizes the risk of accidents in the workplace. The clothing with reflective tape provides for an optimal recognition of the support in all areas-even in poor light and weather conditions.



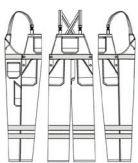
Jacket 2220

with high neck collar, concealed button placket, two side pockets with flaps, two chest pockets with flaps, reflective strips on front and back, reflective stripes on the sleeves, each with 2 eyelets on the sleeves



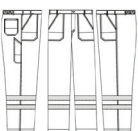
Dungarees with Velcro 2221

To close with stretch straps and quick release buckle 2 side pockets, 1 bib pocket with flap and concealed attached velcro, 1 back pocket right pocket ruler pocket on the right, reflective stripes on the legs, reflective tape continuously on the front waistband and back, side opening on the left and right



Dungarees with zip 2222

To close with stretch straps and buckles, 2 side pockets, 1 bib, bib pocket with hidden attached zip, 1 back pocket right pocket ruler pocket on the right, reflective stripes on the legs, reflective tape continuously on the front waistband and back, side opening on the left and right



Trousers 2223

Waistband with 6 belt loops, 2 side pockets, back pocket, right pocket ruler pocket on the right, reflective stripes on the legs, adjustable via the elastic in the waistband center



Dunatex